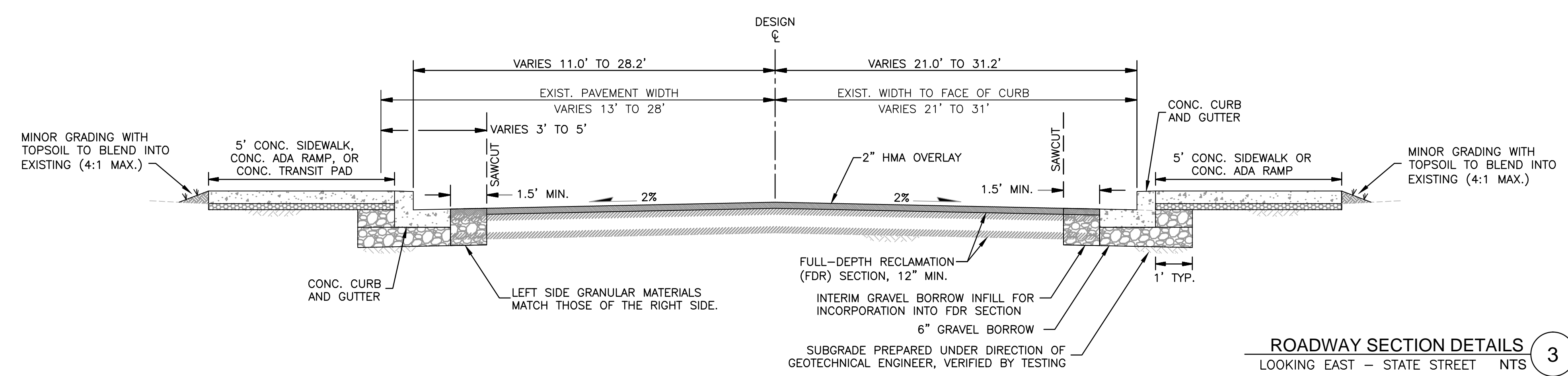
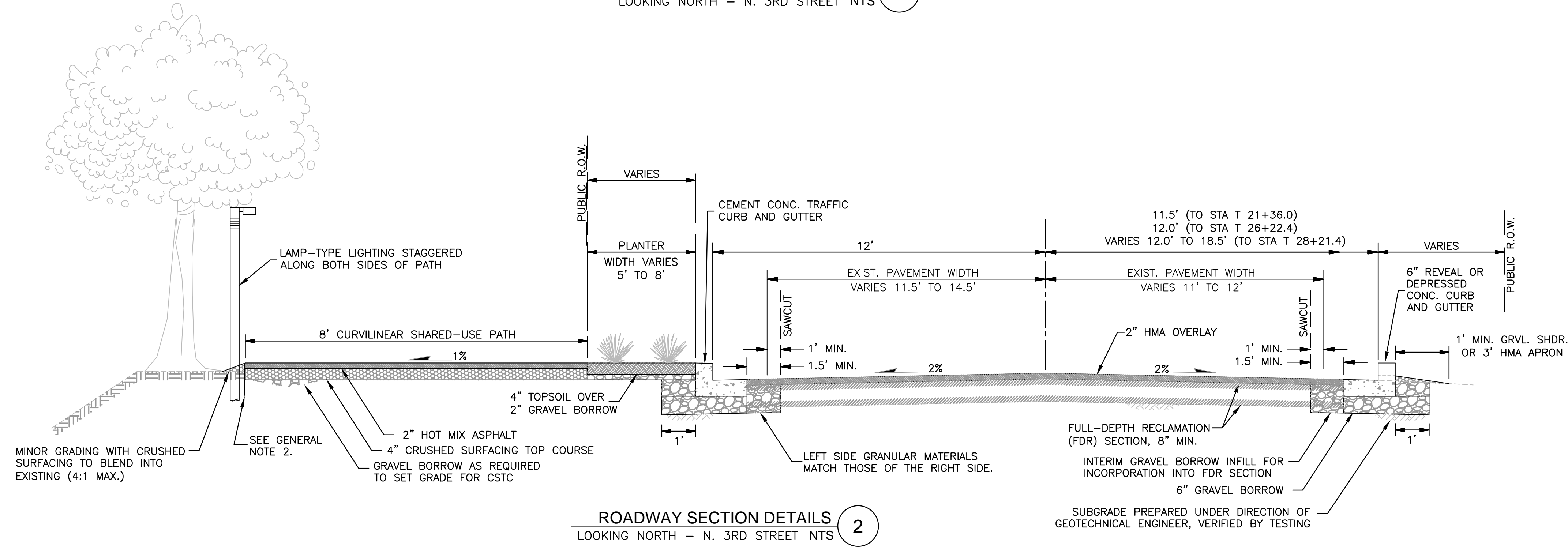
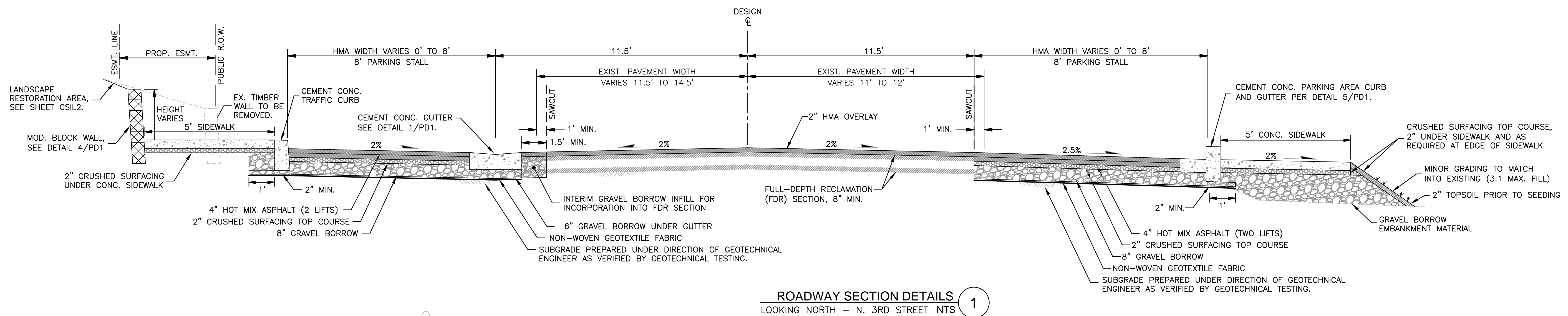


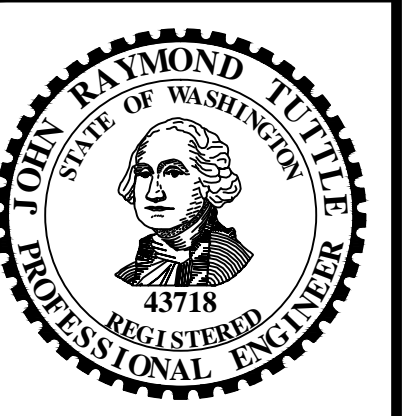
N. 3RD STREET AND STATE STREET – N. 1ST STREET TO SULLIVAN SLOUGH

ROADWAY AND WATER MAIN IMPROVEMENTS



FINAL PROJECT LAYOUT

Revisions	Description
Date	



TUTTLE ENGINEERING AND MANAGEMENT
275 WEST RIO VISTA AVENUE, SUITE 1 BURLINGTON, WA 98233
C: (360) 895-5553 M: (360) 920-7030 WWW.TUTTLE-TEAM.COM

Prepared For: The Town of La Conner

PUBLIC MEETING FIGURES
ROADWAY AND WATER MAIN IMPROVEMENTS
NORTH THIRD STREET AND STATE STREET

Scale: 1" = 30'

Project ID: T17-002

Issue Date: APRIL 25, 2017

Sheet ID: **PM2**